

## Books List

## Flora Public Library

216 North Main Street

Flora, IL 62839-1510

(618) 662-6553

### LIBRARY HOURS

**Monday-Thursday**

1—8 pm

**Friday**

10 am—6 pm

**Saturday**

10 am—3 pm

## Flora Public Library



**LIBBY**

**APP**

**QUICK**

**START**

**GUIDE**

The Libby app is the easiest way to get started with digital books, audiobooks from your public library!

1

Install the Libby app from the app store on your Android or iOS (iPhone/iPad/iPod touch) device. Or, visit [libbyapp.com](http://libbyapp.com) in your Chrome, Firefox, Safari, or Edge browser.

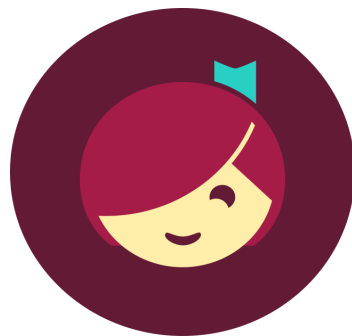
2

In Libby, follow the prompts to find your library and sign in with a valid library card.


3

Browse your library's collection and borrow a title.

For more help with Libby, visit [help.libbyapp.com](http://help.libbyapp.com)



4

Borrowed titles appear on your Shelf (  ) and download to the app automatically when you're on Wi-Fi, so you can read them when you are offline.

On your Shelf, tap loans at the top of the screen. From there, you can:

- Tap **Read With . . .** To choose whether you'd like to open a book in Kindle or Libby.
- Tap **Open In Libby** to start reading or listening in the app.
- Tap **Manage Loan** to see options like **Renew Loan** and **Return Early**.